



IMAGE**A****I****XPERT**

The universal laboratory
documentation imager

LemnaTec Alxpert Product Family

Documentation, Phenotyping, Seed Testing and more

IMAGEAI^{XP}ERT

The universal laboratory documentation imager that reliably captures, stores and retrieves images of laboratory samples.

- Save time and labor in documentation tasks
- Reproducible and standardizable through unified image and information storage
- For many samples in lab application
- Overcome inconsistent image acquisition and storage
- Shielding of external light
- Industry-grade camera with lon-term availability
- The documenting system that allows upgrading to a fully functional phenotyping system

Features

- Reliable technology that makes documenting easy
- Image acquisition, storage, and retrieval
- Image annotation, metadata recording
- Metadata and annotation directly linked to image
- Structured image file administration system
- Easy export of images and data
- Intuitive graphical user interface
- 12 Megapixel industrial camera

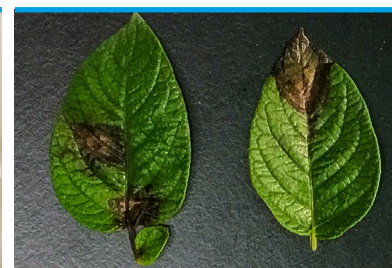
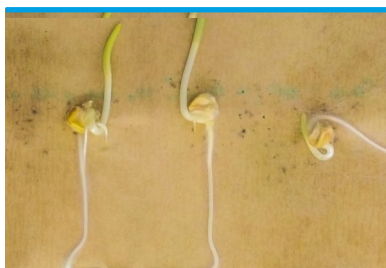


As a lab technician at a plant breeder, I used to struggle with assigning names, taking notes and storing the images on my computer. Moreover, I had to place a camera and a suitable light source somewhere, but changing light conditions led to non-comparable images. For me, ImageAIxpert has made my life much easier - upon image acquisition, I can store name and other meta data consistently with the image as they are easy to retrieve. The image quality is always constant. I can honestly say, ImageAIxpert has become my best lab mate for sample documentation.

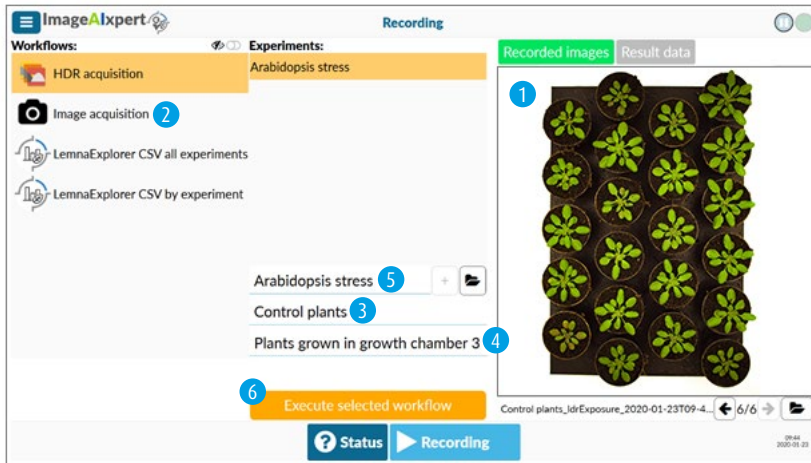
Lena, lab technician at a plant breeder



Customers' application examples



Simple-to-use graphical user interface



- 1 Image preview
- 2 Selection of functions
- 3 Name of sample
- 4 Optional input:
 - sample description
 - free text
- 5 Name of experiment or image series
- 6 Button for image recording

Optional accessories

- Sample stage as light box—for samples requiring bottom illumination
- Image calibration object—ensure constant image quality
- Sample holders for standard objects (MTPs, petri dishes, pots)—easy positioning of the samples
- Preconfigured computer
- Barcode reader
- Barcode printer

Future features

- Database connectivity
- Cloud services
- Easy to install

Upgrade options

- Image processing package PhenoAlxpert
- Image processing package SeedAlxpert



Manufactured by LemnaTec, distributed in the UK and Ireland by **analytik**.

